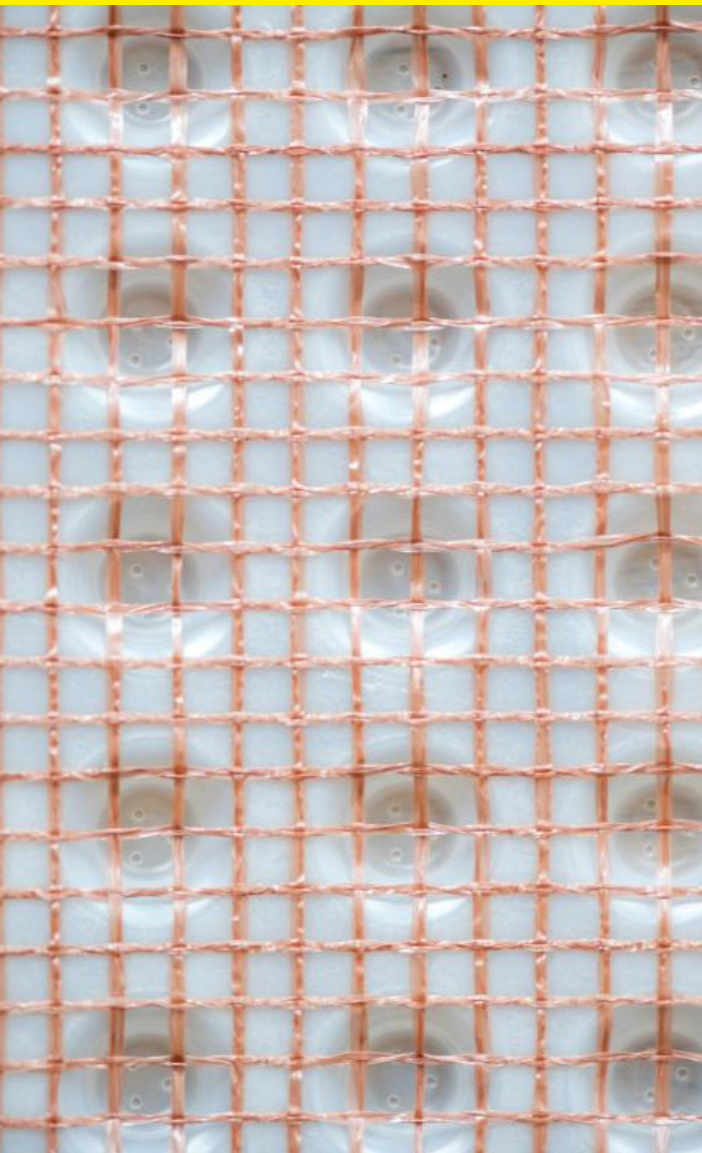


# PRODUCT DATA SHEET

## DELTA PT/LATH/SLIMLINE

Product Code: DMS001/DMS002



[info@deltamembranes.com](mailto:info@deltamembranes.com)

[www.deltamembranes.com](http://www.deltamembranes.com)

01992 523 523

**Delta PT has been designed with a plastic mesh which is welded to the surface of this dimpled sheeting membrane.**

Delta PT is a High Density Polyethylene (HDPE) cavity drain membrane. Suitable as an impermeable damp proofing base for plaster or shotcrete (and as a water control and drainage membrane) in tunnel construction or for remedial damp proofing and waterproofing of existing basements internally.



### BENEFITS

- Suitable for damp proofing and waterproofing
- Suitable for Flood Resilience
- Available in 3 stud heights
- An effective barrier to the transmission of salts, liquid water and water vapour
- A "reversible" system, which will minimise damage to historical or heritage structures
- Resistant to chemicals, root penetration, rot proof and neutral towards drinking water



### SPECIFICATION

- BBA Approved
- Suitable for new, existing and retrofit structural waterproofing
- Type C Drained Protection in accordance with BS 8102:2009
- NBS Specification J40 (Clause 290) Flexible Sheet Tanking/Damp Proofing.



### ASSOCIATED PRODUCTS

- Delta PT Plugs,
- Delta Flexi Dri Plus Plugs
- Sealing Tape
- Fleece Tape
- Delta Channel
- PT Ventilation Profile

# PRODUCT DATA SHEET

## DELTA PT/LATH/SLIMLINE

Product Code: DMS001/DMS002

### TECHNICAL DATA

Material High Density Polyethylene (HDPE)

Sheet Thickness 0.5mm

Stud Height 8mm/7mm

Roll Size DMS001 LATH 1.5 x 10m  
DMS002 PT 2.0 x 20m

Compressive Strength 70 kN/M<sup>2</sup>

Drainage Capacity 5 L/S M  
300 L/MIN M  
18 100 L/H M

Air Volume Between Studs 5.5 l/m<sup>2</sup>

Temperature Resistance -30°C to +80°C

Reaction to Fire EN13501-1 Class E

#### Head Office:

Delta House, Merlin Way, North Weald, Epping, Essex, CM16 6HR  
01992 523 523 | [info@deltamembranes.com](mailto:info@deltamembranes.com) | [www.deltamembranes.com](http://www.deltamembranes.com)

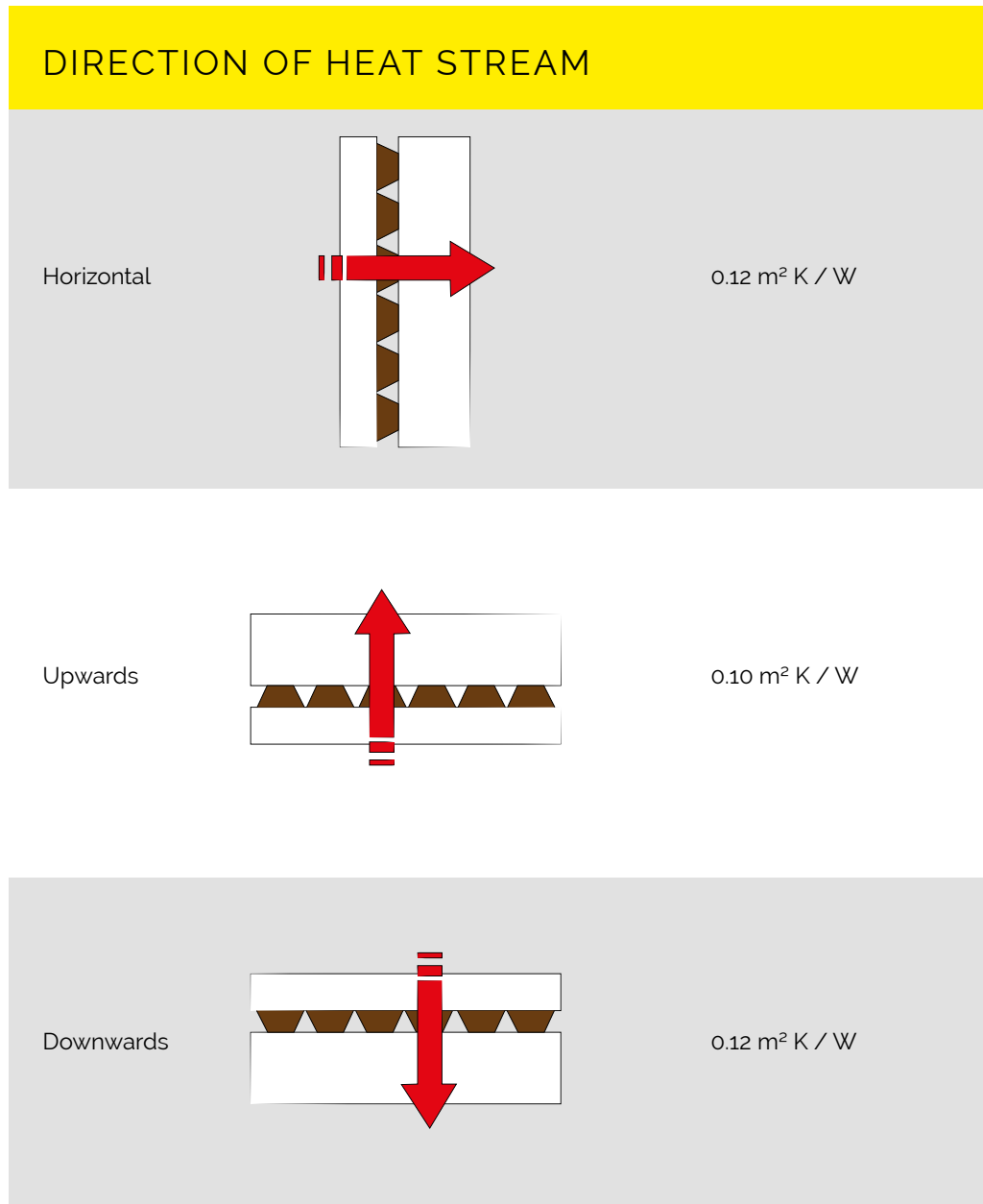
DMS\_PT\_Lath\_Slimline\_PDS\_V2

# PRODUCT DATA SHEET

## DELTA PT/LATH/SLIMLINE

Product Code: DMS001/DMS002

### 'R' VALUE DELTA PT



The thermal resistance values are calculated following DIN EN ISO 6946

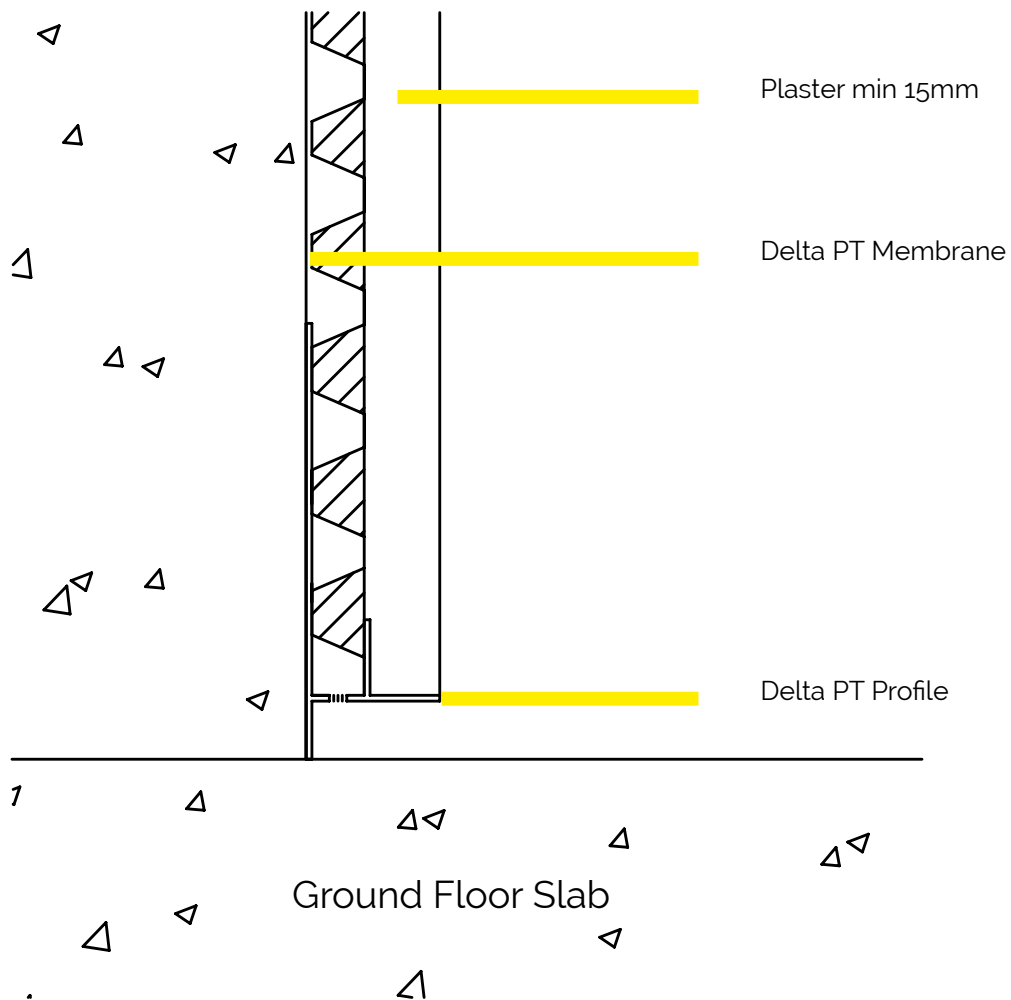
# PRODUCT DATA SHEET

## DELTA PT/LATH/SLIMLINE

Product Code: DMS001/DMS002

### TECHNICAL DRAWING

Placement of the Delta PT Membranes



Head Office:

Delta House, Merlin Way, North Weald, Epping, Essex, CM16 6HR

01992 523 523 | [info@deltamembranes.com](mailto:info@deltamembranes.com) | [www.deltamembranes.com](http://www.deltamembranes.com)

DMS\_PT\_Lath\_Slimline\_PDS\_V2

# PRODUCT DATA SHEET

## DELTA PT/LATH/SLIMLINE

Product Code: DMS001/DMS002

### TECHNICAL DRAWING

Delta PT Ventilation Profile

Delta PT Profile

